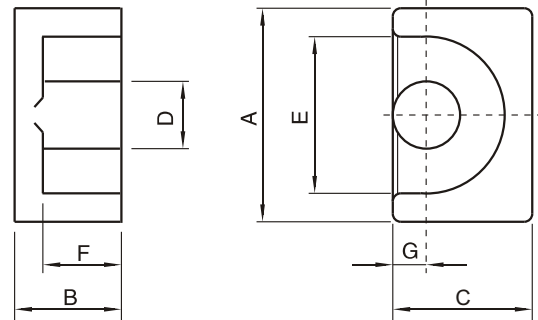
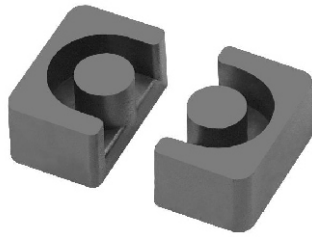


EP CORES

Meisongbei

Material: M3K, M2, M3, M5K



Type	Dimension(mm)							Weight (g)
	A	B	C	D	E	F	G	
EP7	9.2±0.2	3.7±0.05	6.35±0.15	3.3±0.1	7.4±0.2	2.6±0.1		1.4
EP10	11.5±0.3	5.1±0.1	7.9(+0.0/-0.4)	3.3±0.2	9.6(+0.0/-0.4)	3.7±0.1		2.8
EP13	12.5±0.3	6.5±0.3	8.8±0.2	4.4±0.2	10.0±0.3	4.5(+0.4/-0.0)		4.9
EP17	18.1±0.4	8.4±0.4	11.3(+0.0/-0.6)	5.9(+0.0/-0.4)	12.0±0.4	5.5(+0.4/-0.0)	3.25±0.2	11.8
EP20	24.0±0.5	10.7±0.2	15.0±0.4	8.8±0.3	16.5±0.4	7.0(+0.4/-0.0)	45±0.2	28
EP30	31.5(+0.0/-1.0)	15.0±0.2	23.1±0.5	14.8(+0.0/-0.5)	23.8(+0.8/-0.0)	11.6(+0.4/-0.0)	4.5±0.25	75

Type	Effective Parameter				AL(nH/N ²)					
	C1 (mm ⁻¹)	Le (mm)	Ae (mm ²)	Ve (mm ³)	M3K (±25%)	M2 (±25%)	M3 (±25%)	M5K (±25%)	M7K (±25%)	M10K (±25%)
EP7	1.52	15.7	10.3	162	1010	1000	900	3400	4200	5050
EP10	1.70	19.2	11.30	217	1010	1000	900	3200	4000	4900
EP13	1.24	24.2	19.5	472	1600	1500	1400	4500	5800	7200
EP17	0.84	28.5	33.9	966	3000	2500	2400	6900	8900	11000
EP20	0.51	40.0	78.0	3100	4800	4400	4000	11000	14000	18000
EP30	0.35	62.6	179.0	11200	8200	7400	6600	16800	22000	27000