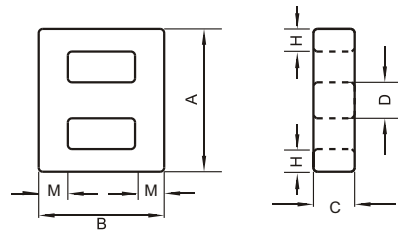
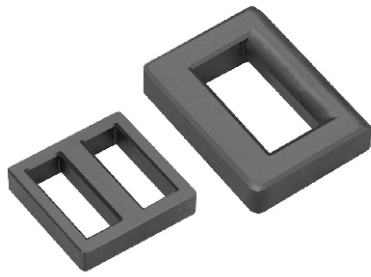


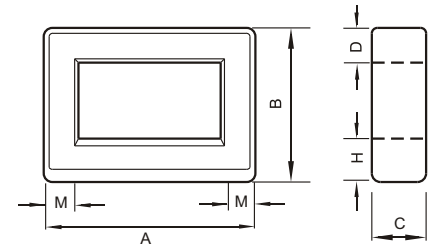
ET & FT CORES

Meisongbei

Material: M5K, M7K, M10K, M12K, M15K



ET



FT

Type	Dimension(mm)						Weight(g)
	A	B	C	D	H	M	
ET20	20.1±0.5	20.1±0.5	4.4±0.3	4.0±0.3	2.2±0.15	2.2±0.15	4.5
ET22	23.5(+0.2/-0.4)	22(+0.1/-0.2)	3.5(+0.2/-0.1)	3.8±0.1	2.2±0.15	2.2±0.15	4.0
ET24	24.2±0.5	24.2±0.5	4.0±0.3	4.0±0.3	2.4±0.15	2.4±0.15	5.6
ET24-Z	24.2±0.5	24.2±0.5	4.0±0.3	4.0±0.3	2.4±0.15	2.4±0.15	5.6
ET25	25.5±0.5	25.5±0.5	5.0±0.3	5.0±0.3	3.1±0.15	3.1±0.15	7.8
ET26	26.0(+0.4/-0.2)	26(+0.4/-0.2)	4.5±0.3	4.5±0.3	2.5±0.15	2.5±0.15	6.4
ET28	28.45±0.55	28.45±0.55	5.0±0.3	5.0±0.3	2.9±0.2	2.9±0.2	10.0
ET28-Z	28.45±0.55	28.45±0.55	5.0±0.3	5.0±0.3	2.9±0.2	2.9±0.2	10.0
ET29	29.0±0.3	30.0±0.3	5.0±0.3	5.0±0.3	3.0±0.2	3.0±0.2	10.5
ET35	35.3±0.6	35.3±0.6	7.5±0.3	7.5±0.3	4.0±0.2	4.0±0.2	24.5
ET35-Z	35.3±0.6	35.3±0.6	7.5±0.3	7.5±0.3	4.0±0.2	4.0±0.2	24.5
FT20	20.6±.3	14.2±0.3	4.3±0.3	4.2±0.2	2.4±0.2	2.4±0.2	3.7

Type	Effective Parameter				AL(nH/N ²)				
	C1 (mm ⁻¹)	Le (mm)	Ae (mm ²)	Ve (mm ³)	M5K (±25%)	M7K (±25%)	M10K (±25%)	M12K (±25%)	M15K (±25%)
ET20	2.96	52.1	17.6	917	2000	2700	3600	4400	
ET22	5.00	66.6	13.5	899.1		2000	3000		
ET24	3.42	61.0	17.8	1090	2000	2700	3600	4400	
ET24-Z	3.42	61.0	17.8	1090	2000	2700	3600		
ET25	3.24	63.0	20.0	1400	2500	3000	4000	4600	
ET26	3.12	66.0	21.1	1395		2800	3600		
ET28	2.61	71.4	27.4	1950	2600	3600	4500	5400	620
ET28-Z	2.61	71.4	27.4	1950	2600	3600	4500		
ET29	2.67	74.5	27.9	2070		3600	4500		
ET35	1.48	86.7	58.6	5080	4000	5000	6400	8500	9600
ET35-Z	1.48	86.7	58.6	5080	4000	5000	6400		
FT20	4.4	52	11.9	768	1600	2100	2900	3300	

SHANGHAI MEISONGBEI ELECTRONICS CO.,LTD

NO.528 Kangding Road,Jing'An,Shanghai Tel:0086-21-62883517 Fax:0086-21-62883519 www.meisongbei.com