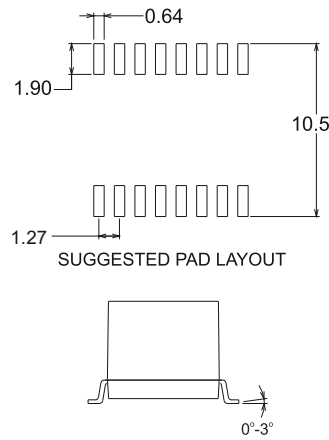
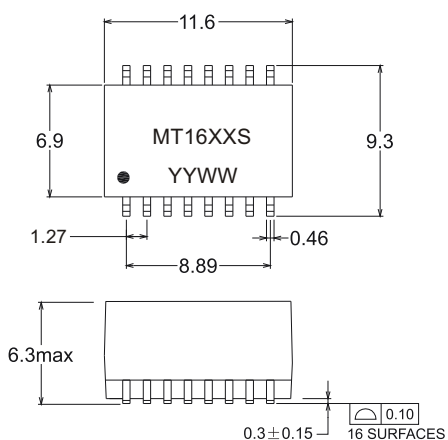


- Meets IEEE 802.3 & ANSI X 3.263 Standards
- RoHS Compliance
- Surface mount, open header construction
- Standard operating temp: 0°C to +70°C
- Industrial operating temp: -40°C to +86°C

Electrical Specifications @25°C

Part Number	Turns Ratio (±5%)	OCL (uH Min)		Lk (uH Max)		CWW (pF Max)		DCR(25°C) (Ω Max)		HI-POT	Primary Pins
		100KHz	0.2V	100KHz	0.2V	100KHz	0.2V	Pri	Sec		
MT1601S	1CT:1CT & 1CT:1.414CT	200		0.4		13		0.3		2000VAC	1-3,6-8
MT1602S	1CT:1CT & 1CT:2.5CT	200		0.5		15		0.8		2000VAC	1-3,6-8
MT1606S	1:1	75 ± 20%		0.2		8		0.3		2000VAC	1-2,4-5,7-8
MT1608S	1CT:1CT & 1CT:1CT	100		0.3		20		0.4		1500VAC	1-3,6-8
MT1609S	1:1	350 ± 25%		0.3		16		0.35		1500VAC	1-2,4-5,7-8
MT1610S	1:1	350 ± 25%		0.3		16		0.35		2000VAC	1-2,4-5,7-8
MT1611S	1:1	7.5		0.1		5		0.2		2000VAC	1-3,6-8
MT1612S	1:3.33	4		0.3		20		0.8		1500VAC	1-3,6-8
MT1613S	1:2.75	4		0.3		20		0.8		1500VAC	1-3,6-8
MT1614S	1:1	3200 ± 30%		0.5		30		0.8		1500VAC	1-3,6-8
MT1615S	1CT:1CT & 1CT:2CT	140		0.5		15		0.6		2000VAC	1-3,6-8

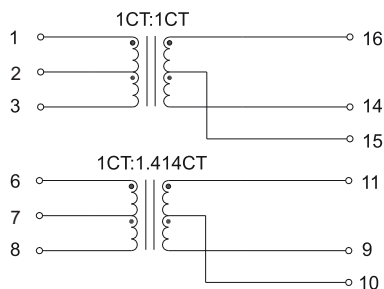
MECHANICAL



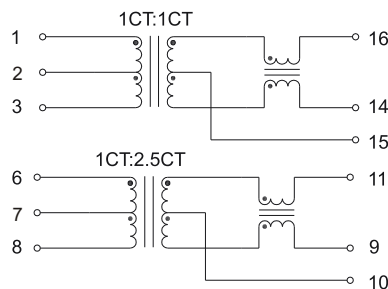
Unless otherwise specified all tolerances are: ±0.25 in mm

SCHEMATICS

MT1601S

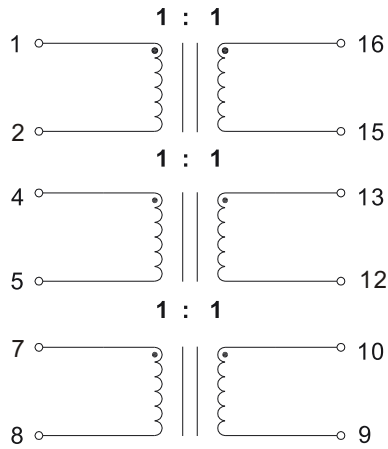


MT1602S

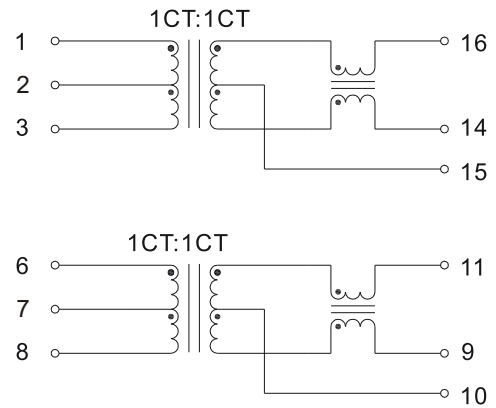


▶ SCHEMATICS

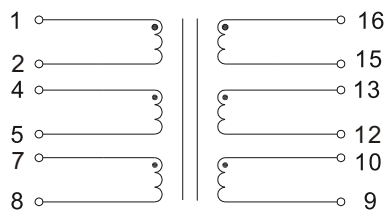
MT1606S, MT1610S



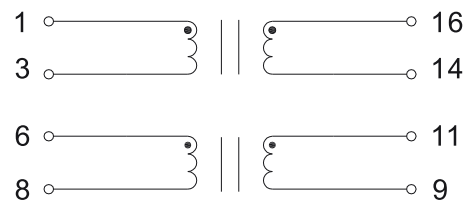
MT1608S



MT1609S



MT1611S, MT1612S, MT1613S, MT1614S



MT1616S

