



Features

- Ferrite drum core construction
- Magnetically shielded
- Custom design on request

General Specifications

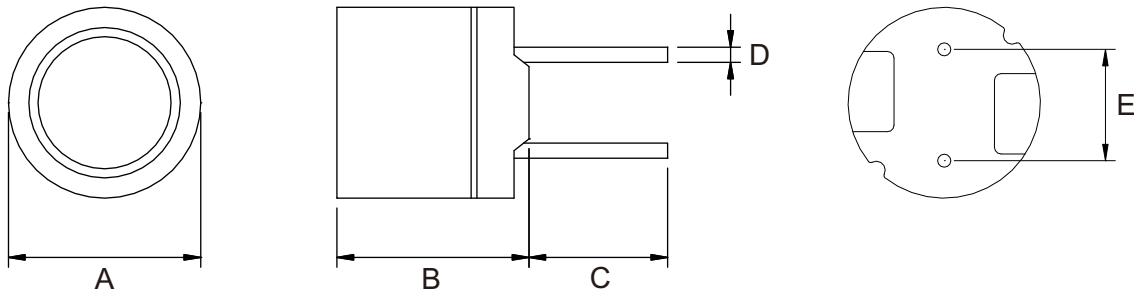
- Storage temp range: -40°C to +85°C
- Operating temp range: -25°C to +85°C
- Moisture Sensitivity Level(MSL): 1

Application:

- EMI filter
- Signal filtering
- Power supply filter
- Switching power supply



► Dimensions & Configurations (Unit:mm)



Type	A (max)	B (max)	C ± 1	D ± 0.1	E ± 0.5
MC2W0807C	8.3	7.5	5.0	0.7	5
MC2W1008C	10.5	8.5	3.5	0.7	5
MC2W1010C	10.5	10.5	3.5	0.7	5

▶ Electrical Characteristics For MC2W0807C Series

Part Number	Inductance [μ H]	DCR(max) [Ω]	IDC [A]
MC2W0807C-1R2M	1.2 \pm 20%	0.018	4.14
MC2W0807C-1R7M	1.7 \pm 20%	0.022	3.75
MC2W0807C-2R3M	2.3 \pm 20%	0.025	3.45
MC2W0807C-3R0M	3.0 \pm 20%	0.028	3.25
MC2W0807C-3R9M	3.9 \pm 20%	0.031	3.08
MC2W0807C-4R7M	4.7 \pm 20%	0.035	2.94
MC2W0807C-5R6M	5.6 \pm 20%	0.039	2.82
MC2W0807C-7R0M	7.0 \pm 20%	0.043	2.68
MC2W0807C-8R2M	8.2 \pm 20%	0.047	2.55
MC2W0807C-100M	10 \pm 20%	0.050	2.40
MC2W0807C-150M	15 \pm 20%	0.062	1.95
MC2W0807C-220M	22 \pm 20%	0.080	1.60
MC2W0807C-330M	33 \pm 20%	0.14	1.30
MC2W0807C-470M	47 \pm 20%	0.17	1.10
MC2W0807C-560M	56 \pm 20%	0.19	0.99
MC2W0807C-680M	68 \pm 20%	0.21	0.89
MC2W0807C-101M	100 \pm 20%	0.32	0.74
MC2W0807C-151M	150 \pm 20%	0.51	0.60
MC2W0807C-221M	220 \pm 20%	0.76	0.50
MC2W0807C-331M	330 \pm 20%	0.97	0.41
MC2W0807C-471M	460 \pm 20%	1.44	0.34
MC2W0807C-561M	560 \pm 20%	1.61	0.31
MC2W0807C-681M	680 \pm 20%	2.07	0.28
MC2W0807C-102M	1000 \pm 20%	2.72	0.23
MC2W0807C-152M	1500 \pm 20%	4.50	0.19
MC2W0807C-222M	2200 \pm 20%	7.56	0.16
MC2W0807C-332M	3300 \pm 20%	9.74	0.13
MC2W0807C-392M	3900 \pm 20%	12.9	0.12
MC2W0807C-472M	4700 \pm 20%	14.7	0.11

- Inductance tested at 1kHz, 0.25V
- Idc: DC current at which the inductance drops 10%(typ) from its value without current

Electrical Characteristics For MC2W1008C Series

Part Number	Inductance [μ H]	DCR(max) [Ω]	IDC [A]
MC2W1008C-1R0N	1.0 \pm 30%	6.5m	9.15
MC2W1008C-1R5N	1.5 \pm 30%	8.5m	7.14
MC2W1008C-2R2N	2.2 \pm 30%	9.5m	6.05
MC2W1008C-3R3N	3.3 \pm 30%	13.5m	4.90
MC2W1008C-4R3N	4.3 \pm 30%	14.5m	4.25
MC2W1008C-5R6N	5.6 \pm 30%	18.5m	3.65
MC2W1008C-6R8N	6.8 \pm 30%	20.0m	3.40
MC2W1008C-8R2N	8.2 \pm 30%	20.5m	3.00
MC2W1008C-100M	10 \pm 20%	0.05	2.80
MC2W1008C-120M	12 \pm 20%	0.06	2.50
MC2W1008C-150M	15 \pm 20%	0.07	2.30
MC2W1008C-180M	18 \pm 20%	0.08	2.10
MC2W1008C-220M	22 \pm 20%	0.09	2.00
MC2W1008C-270M	27 \pm 20%	0.10	1.76
MC2W1008C-330M	33 \pm 20%	0.11	1.60
MC2W1008C-390M	39 \pm 20%	0.12	1.38
MC2W1008C-470M	47 \pm 20%	0.14	1.28
MC2W1008C-560M	56 \pm 20%	0.15	1.20
MC2W1008C-680M	68 \pm 20%	0.16	1.00
MC2W1008C-820M	82 \pm 20%	0.18	0.96
MC2W1008C-101M	100 \pm 20%	0.20	0.92
MC2W1008C-121M	120 \pm 20%	0.24	0.80
MC2W1008C-151M	150 \pm 20%	0.35	0.73
MC2W1008C-181M	180 \pm 20%	0.40	0.64
MC2W1008C-221M	220 \pm 20%	0.54	0.61
MC2W1008C-271M	270 \pm 20%	0.76	0.56
MC2W1008C-331M	330 \pm 20%	0.86	0.50
MC2W1008C-391M	390 \pm 20%	0.93	0.44
MC2W1008C-471M	470 \pm 20%	1.23	0.41
MC2W1008C-561M	560 \pm 20%	1.34	0.38
MC2W1008C-681M	680 \pm 20%	1.53	0.34
MC2W1008C-821M	820 \pm 20%	2.10	0.32
MC2W1008C-102M	1000 \pm 20%	2.30	0.28

- Inductance tested at 1kHz, 0.25V
- Idc: DC current at which the inductance drops 10%(typ) from its value without current

▶ Electrical Characteristics For MC2W1010C Series

Part Number	Inductance [μH]	DCR(max) [Ω]	IDC [A]
MC2W1010C-100M	10 ±20%	0.023	3.51
MC2W1010C-120M	12 ±20%	0.024	3.24
MC2W1010C-150M	15 ±20%	0.036	2.88
MC2W1010C-180M	18 ±20%	0.039	2.61
MC2W1010C-220M	22 ±20%	0.042	2.34
MC2W1010C-270M	27 ±20%	0.045	2.16
MC2W1010C-330M	33 ±20%	0.057	1.89
MC2W1010C-390M	39 ±20%	0.076	1.80
MC2W1010C-470M	47 ±20%	0.10	1.62
MC2W1010C-560M	56 ±20%	0.11	1.44
MC2W1010C-680M	68 ±20%	0.15	1.35
MC2W1010C-820M	82 ±20%	0.16	1.26
MC2W1010C-101M	100 ±20%	0.19	1.08
MC2W1010C-121M	120 ±20%	0.21	0.99
MC2W1010C-151M	150 ±20%	0.23	0.90
MC2W1010C-181M	180 ±20%	0.26	0.82
MC2W1010C-221M	220 ±20%	0.29	0.74
MC2W1010C-271M	270 ±20%	0.36	0.67
MC2W1010C-331M	330 ±20%	0.51	0.61
MC2W1010C-391M	390 ±20%	0.69	0.55
MC2W1010C-471M	470 ±20%	0.98	0.51
MC2W1010C-561M	560 ±20%	1.10	0.46
MC2W1010C-681M	680 ±20%	1.20	0.42
MC2W1010C-821M	820 ±20%	1.30	0.38
MC2W1010C-102M	1000 ±20%	1.50	0.35

- Inductance tested at 1kHz, 0.25V
- Idc: DC current at which the inductance drops 10%(typ) from its value without current