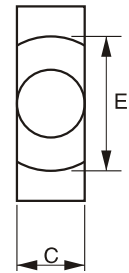
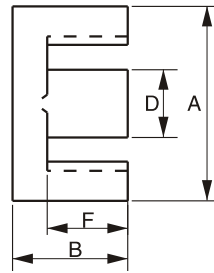
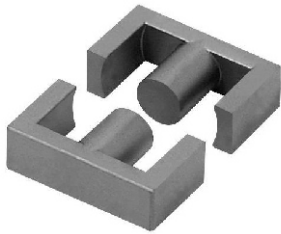


Material: M3K, M2, M3



Type	Dimension(mm)						Effective Parameter				AL(nH/N ²)			Weight (g)
	A	B	C	D	E _{min}	F	C1 (mm ⁻¹)	Le (mm)	Ae (mm ²)	Ve (mm ³)	M3K (±25%)	M2 (±25%)	M3 (±25%)	
EC28A	28.5±0.6	14.0±0.5	11.2±0.3	9.8±0.3	21.0	9.7±0.3	0.978	80.2	82	6550.0		2800	2500	32.0
EC28B	28.5±0.6	8.5±0.3	11.2±0.3	9.8±0.3	21.0	4.9±0.3	0.928	75.5	81.4	6143		2900	2600	18.3
EC34	34.2±0.6	17.3±0.5	10.8±0.4	10.8±0.3	25.6	12.1±0.3	0.810	78.6	97.1	7632	2800	2600	2500	40.0
EC35A	35.3±0.7	21.5±0.4	11.3±0.4	11.3±0.3	26.4	15.4±0.3	0.839	91.6	109.3	10110		3400	3000	48.0
EC35B	35.0±0.7	21.0±0.5	11.3±0.4	11.3±0.3	25.6	15.6±0.5	0.840	90.0	107.0	9630	2800	2800	2570	54.0
ECL36	36.0±0.6	21.8±0.3	11.3±0.2	11.3±0.15	27.0	16.0±0.3	0.860	91.6	107.0	9780		3300	2900	55.0
EC39	39.1±0.7	20.4±0.5	12.5±0.3	12.5±0.3	29.0	15.0±0.5	0.737	92.1	125.0	11510	3200	3000	2800	60.0
EC40	40.0±1.0	22.0±0.4	13.3±0.3	13.3±0.15	28.8	15.4±0.3	0.652	100.4	154.0	15460		4400	3900	82.0
EC42A	42.0±0.6	22.4±0.3	15.5±0.25	15.5±0.25	28.9	15.4±0.3	0.509	98.8	194.0	19160		5600	5000	102.0
EC42B	42.0±0.5	21.5±0.3	15.2±0.2	15.2±0.2	30.6	15.5±0.3	0.531	97.7	184	17940		5400	4700	100.0
EC42C	42.0±0.5	22.4±0.5	15.5±0.3	15.5±0.3	29.4	15.4±0.5	0.500	95.5	203.7	19455.5	4200	4000	3800	90.0
EC43	43.0±0.8	22.4±0.4	15.0±0.4	15.0±0.3	31.5	15.4±0.3	0.563	98.8	176	17340		5100	4500	96.0
EC49A	49.0±1.0	26.6±0.5	17.0±0.2	17.0±0.2	36.4	18.8±0.4	0.485	117.8	243	28630		61000	5300	148.2
EC49B	49.0±0.7	24.7±0.25	16.3±0.25	16.3±0.25	36.1	18.2±0.25	0.485	117.8	243	28630		6100	5300	122.0
EC50	50.5±0.5	27.0±0.4	18.7±0.3	18.7±0.3	38.3	18.7±0.4	0.486	130.6	269	35107		6200	5400	166.0
EC52	52.2±1.3	24.2±0.15	13.4±0.35	13.4±0.35	33.0±0.9	5.9±0.4	0.580	180	105	18800		5400	4700	111.0
EC53	53.5±1.0	17.8±0.2	17.9±0.4	17.9±0.4	40.7	10.3±0.3	0.362	89.1	246	21920		7800	6900	112.0