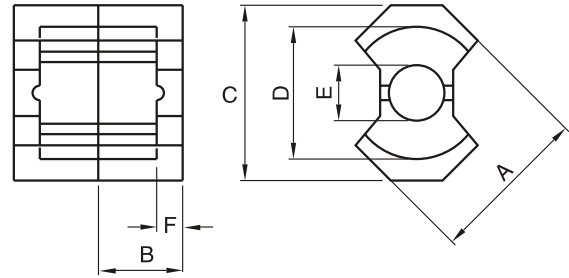
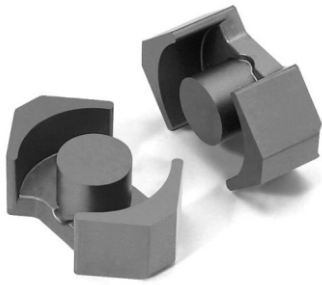


# RM CORES

**Meisongbei**

Material: M2, M3



Type	Dimension(mm)					
	A	B	C	D	E	F
RM4	9.8(+0.0/-0.4)	5.2±0.1	11.6±0.2	8.15±0.2	9.8(+0.0/-0.4)	3.5(+0.2/-0.0)
RM5	12.3(+0.0/-0.5)	5.2±0.1	14.65±0.25	10.4±0.2	4.8±0.1	3.25±0.1
RM6	14.4±0.3	6.2±0.1	17.6±0.3	12.65±0.25	6.3±0.1	4.1±0.1
RM8	19.7(+0.0/-0.7)	8.2±0.1	23.2(+0.0/-0.9)	17.0(+0.6/-0.0)	8.55(+0.0/-0.3)	5.5±0.1
RM10	24.2±0.55	9.3±.1	27.85±0.65	21.65±0.45	10.7±0.2	6.35±0.1
RM12	29.2±0.6	11.75±0.1	36.75±0.65	25.5±0.5	12.8(+0.0/-0.4)	8.55±0.15
RM14	34.2±0.5	14.4±.0	41.6±0.6	29.5±0.5	14.75±0.25	10.55±0.15

Type	Effective Parameter				AL(nH/N <sup>2</sup> )		Weight (g)
	C1 (mm <sup>-1</sup> )	Le (mm)	Ae (mm <sup>2</sup> )	Ve (mm <sup>3</sup> )	M2 (±25%)	M3 (±25%)	
RM4	1.62	22.5	13.9	313	720.0	680	1.7
RM5	0.94	22.3	23.8	530	1350.0	1250	3.2
RM6	0.78	29	37	1050	1720	1600	5.5
RM8	0.59	38	64	2400	2200	1950	12.5
RM10	0.45	44	98	4310	3900	3630	23
RM12	0.4	56.9	140	7960	4500	4150	42
RM14	0.4	71	178	12600	5000	4600	70