



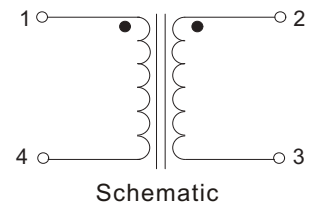
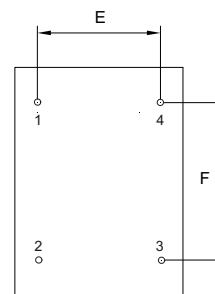
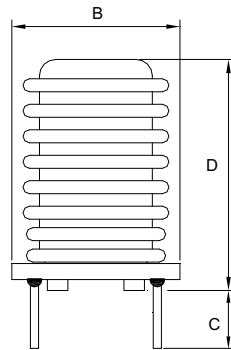
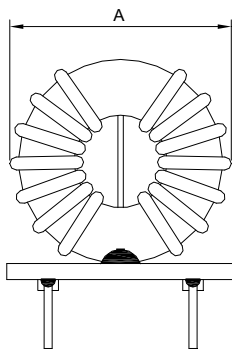
Features

- Low cost
- Dielectric strength: 1500 Vrms
- Fixed pin spacing allow easy PCB insertion
- Operating temperature: -40 to +125°C
- Custom Designs Available

Application

- DC/DC, AC/DC line noise suppression
- Automotive Systems
- Communication System

► Dimensions & Configurations (Unit:mm)



Type	A	B	C	D	E	F
CTR2010	23.5 Max.	17.0 Max.	3.0±0.5	28.0 Max.	10.7±0.5	7.5±0.5

► Electrical Characteristics For CTR2010 Series

Part Number	Inductance [mH]	Rated Current [A]	DCR(max) [mΩ]
CTR2010-102N	1.0±30%	6.0	13
CTR2010-222N	2.2±30%	4.0	30
CTR2010-332N	3.3±30%	2.5	60
CTR2010-502N	5.0±30%	2.5	95
CTR2010-103N	10.0±30%	2.0	125
CTR2010-203N	20.0±30%	1.5	270

1. Inductance is per winding, measured with a LCR meter 4284A at 10KHz
2. Nominal Voltage: 250VAC
3. Electrical specifications at 25°C