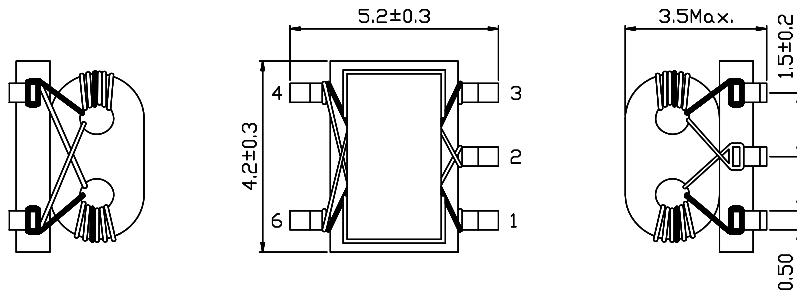


Feature and application

- Surface Mount.
- Available on tape and reel.
- Ideally suited for High volume CATV/Broadband applications.



▶ Dimensions(mm)



▶ Pin Connection

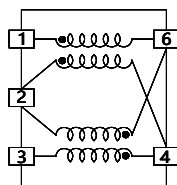


Fig.A

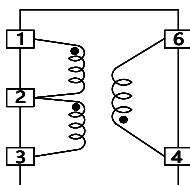


Fig. B

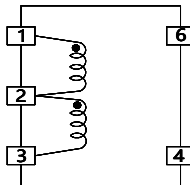


Fig. C

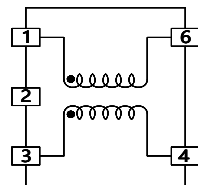


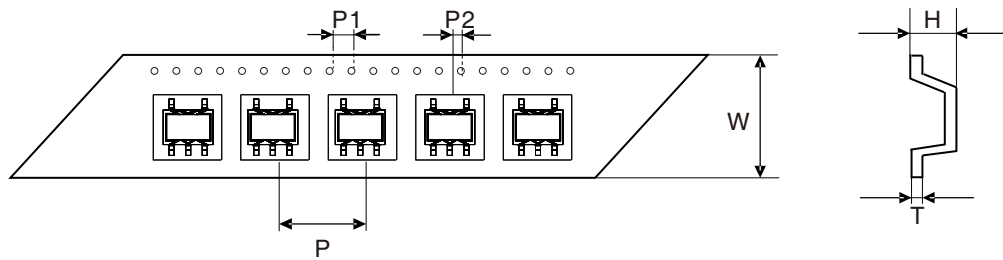
Fig. D

▶ Electrical characteristics(at 20°C)

Part No.	Turns	Frequency Range (MHz)	Insertion Loss(dB) [Max.]	Fig.
MB4F-617DB-1007A	2.5	25~2000	3.0	A
MB4F-617DB-1009A	3.5	6.0~2000	3.0	A
MB4F-617DB-1010A	4.5	2.0~2000	3.0	A
MB4F-617DB-1029B	4	--	--	B
MB4F-617DB-1076C	3	50~800	6.5	C
MB4F-617DB-1021D	1.5	20~750	3.0	D
MB4F-617DB-1022D	2.5	4.5~3300	3.0	D
MB4F-617DB-1023D	3.5	2.3~2700	3.0	D
MB4F-617DB-1024D	4.5	1.5~2400	3.0	D

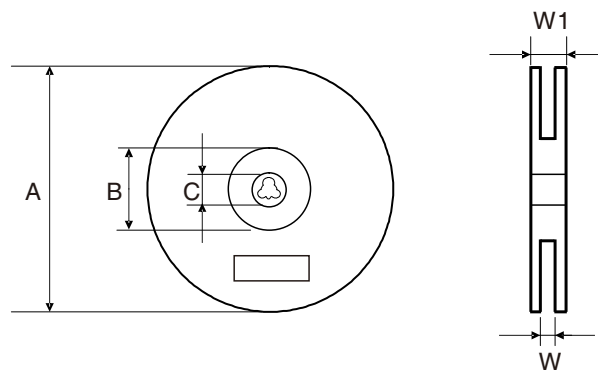
- Measuring equipment:
Insertion Loss :HP8711A or equivalent

Tape & Reel Specifications:



Unit: mm

Type	Dimension	W	P	P1	P2	H	T
	Tolerance		±0.3	±0.1	±0.1	±0.1	±0.15
MB4F		16.0	12.0	4.00	2.00	4.80	0.35



Unit: mm

Type	Dimension	QTY Per Reel	A	B	C	W	W1
	Tolerance		Pcs	±2.0	min	±0.5	±0.5
MB4F		1000	330	100	13.5	16.5	21.0