



Features

- Magnetically unshielded
- Low cost, high current power inductors
- Custom design on request

Applications

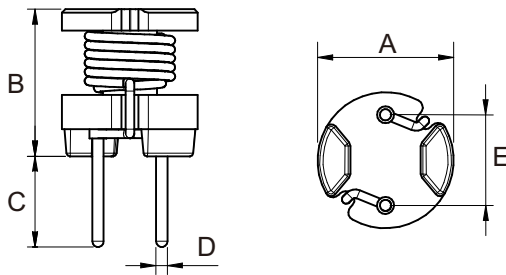
- Signal filtering
- Switches, Power supply filter
- EMI filter

General Specifications

- Storage temp range: -40°C to +125°C
- Operating temp range: -40°C to +125°C
- Moisture Sensitivity Level(MSL): 1



► Shape and Dimensions (Unit:mm)



Type	A (±0.5)	B (max)	C (±1.0)	D (±0.1)	E (±0.5)
MC2W0605	6.0	5.0	4.0	0.5	4.0
MC2W0606	6.0	6.5	4.0	0.5	4.0
MC2W0805	7.8	5.5	5.0	0.7	5.0
MC2W0807	7.8	7.5	5.0	0.7	5.0
MC2W0809	7.8	9.5	5.0	0.7	5.0
MC2W1014	10.0	14.5	5.0	0.8	5.0

► Electrical Characteristics For MC2W0605 Series

Part Number	Inductance [uH]	DCR (max) [Ω]	Rated Current (max) [A]
MC2W0605-220M	22 ±20%	0.18	0.90
MC2W0605-270M	27 ±20%	0.21	0.81
MC2W0605-330M	33 ±20%	0.27	0.74
MC2W0605-390M	39 ±20%	0.29	0.68
MC2W0605-470M	47 ±20%	0.34	0.62
MC2W0605-560M	56 ±20%	0.42	0.57
MC2W0605-680M	68 ±20%	0.48	0.51
MC2W0605-820M	82 ±20%	0.55	0.47
MC2W0605-101K	100 ±10%	0.68	0.42
MC2W0605-121K	120 ±10%	0.77	0.39
MC2W0605-151K	150 ±10%	0.95	0.35
MC2W0605-181K	180 ±10%	1.15	0.32
MC2W0605-221K	220 ±10%	1.30	0.29
MC2W0605-271K	270 ±10%	1.55	0.26
MC2W0605-331K	330 ±10%	2.18	0.23
MC2W0605-391K	390 ±10%	2.47	0.21
MC2W0605-471K	470 ±10%	2.92	0.20
MC2W0605-561K	560 ±10%	3.97	0.18
MC2W0605-681K	680 ±10%	4.57	0.16
MC2W0605-821K	820 ±10%	5.28	0.15
MC2W0605-102K	1000 ±10%	7.06	0.13

▶ Electrical Characteristics For MC2W0606 Series

Part Number	Inductance [uH]	DCR (max) [Ω]	Rated Current (max) [A]
MC2W0606-220M	22 ±20%	0.11	1.27
MC2W0606-270M	27 ±20%	0.14	1.14
MC2W0606-330M	33 ±20%	0.17	1.03
MC2W0606-390M	39 ±20%	0.19	0.95
MC2W0606-470M	47 ±20%	0.23	0.87
MC2W0606-560M	56 ±20%	0.26	0.80
MC2W0606-680M	68 ±20%	0.28	0.72
MC2W0606-820M	82 ±20%	0.39	0.66
MC2W0606-101K	100 ±10%	0.43	0.59
MC2W0606-121K	120 ±10%	0.54	0.54
MC2W0606-151K	150 ±10%	0.64	0.48
MC2W0606-181K	180 ±10%	0.74	0.44
MC2W0606-221K	220 ±10%	0.96	0.40
MC2W0606-271K	270 ±10%	1.12	0.36
MC2W0606-331K	330 ±10%	1.48	0.33
MC2W0606-391K	390 ±10%	1.66	0.30
MC2W0606-471K	470 ±10%	1.91	0.28
MC2W0606-561K	560 ±10%	2.31	0.25
MC2W0606-681K	680 ±10%	2.67	0.23
MC2W0606-821K	820 ±10%	3.10	0.21
MC2W0606-102K	1000 ±10%	4.45	0.19

▶ Electrical Characteristics For MC2W0805 Series

Part Number	Inductance [uH]	DCR (max) [Ω]	Rated Current (max) [A]
MC2W0805-100M	10 ±20%	0.07	2.50
MC2W0805-120M	12 ±20%	0.08	2.40
MC2W0805-150M	15 ±20%	0.09	2.10
MC2W0805-180M	18 ±20%	0.10	2.00
MC2W0805-220M	22 ±20%	0.12	1.70
MC2W0805-270M	27 ±20%	0.14	1.60
MC2W0805-330M	33 ±20%	0.17	1.40
MC2W0805-390M	39 ±20%	0.21	1.30
MC2W0805-470M	47 ±20%	0.24	1.20
MC2W0805-560M	56 ±20%	0.31	1.10
MC2W0805-680M	68 ±20%	0.34	1.00
MC2W0805-820M	82 ±20%	0.40	0.93
MC2W0805-101K	100 ±10%	0.52	0.81
MC2W0805-121K	120 ±10%	0.59	0.76
MC2W0805-151K	150 ±10%	0.71	0.67
MC2W0805-181K	180 ±10%	0.89	0.62
MC2W0805-221K	220 ±10%	1.04	0.54
MC2W0805-271K	270 ±10%	1.28	0.49
MC2W0805-331K	330 ±10%	1.47	0.44
MC2W0805-391K	390 ±10%	1.67	0.41
MC2W0805-471K	470 ±10%	1.95	0.38
MC2W0805-561K	560 ±10%	2.83	0.35
MC2W0805-681K	680 ±10%	3.25	0.32
MC2W0805-821K	820 ±10%	3.82	0.31
MC2W0805-102K	1000 ±10%	5.28	0.25
MC2W0805-122K	1200 ±10%	6.03	0.23
MC2W0805-152K	1500 ±10%	7.15	0.21
MC2W0805-182K	1800 ±10%	8.26	0.20
MC2W0805-222K	2200 ±10%	11.10	0.18
MC2W0805-272K	2700 ±10%	13.10	0.16
MC2W0805-332K	3300 ±10%	15.90	0.14
MC2W0805-392K	3900 ±10%	18.00	0.13
MC2W0805-472K	4700 ±10%	23.90	0.12
MC2W0805-562K	5600 ±10%	26.80	0.11
MC2W0805-682K	6800 ±10%	31.70	0.098
MC2W0805-822K	8200 ±10%	46.50	0.088
MC2W0805-103K	10000 ±10%	55.70	0.081

▶ Electrical Characteristics For MC2W0807 Series

Part Number	Inductance [uH]	DCR (max) [Ω]	Rated Current (max) [A]
MC2W0807-100M	10 ±20%	0.05	2.90
MC2W0807-120M	12 ±20%	0.06	2.50
MC2W0807-150M	15 ±20%	0.07	2.20
MC2W0807-180M	18 ±20%	0.08	1.90
MC2W0807-220M	22 ±20%	0.09	1.80
MC2W0807-270M	27 ±20%	0.11	1.70
MC2W0807-330M	33 ±20%	0.13	1.50
MC2W0807-390M	39 ±20%	0.14	1.30
MC2W0807-470M	47 ±20%	0.15	1.30
MC2W0807-560M	56 ±20%	0.18	1.20
MC2W0807-680M	68 ±20%	0.20	1.10
MC2W0807-820M	82 ±20%	0.24	1.00
MC2W0807-101K	100 ±10%	0.28	0.89
MC2W0807-121K	120 ±10%	0.36	0.81
MC2W0807-151K	150 ±10%	0.42	0.72
MC2W0807-181K	180 ±10%	0.57	0.66
MC2W0807-221K	220 ±10%	0.63	0.57
MC2W0807-271K	270 ±10%	0.88	0.51
MC2W0807-331K	330 ±10%	1.05	0.46
MC2W0807-391K	390 ±10%	1.17	0.44
MC2W0807-471K	470 ±10%	1.34	0.41
MC2W0807-561K	560 ±10%	1.72	0.36
MC2W0807-681K	680 ±10%	1.96	0.33
MC2W0807-821K	820 ±10%	2.56	0.30
MC2W0807-102K	1000 ±10%	2.94	0.27
MC2W0807-122K	1200 ±10%	4.04	0.24
MC2W0807-152K	1500 ±10%	4.70	0.22
MC2W0807-182K	1800 ±10%	5.05	0.20
MC2W0807-222K	2200 ±10%	6.25	0.18
MC2W0807-272K	2700 ±10%	8.72	0.16
MC2W0807-332K	3300 ±10%	10.60	0.15
MC2W0807-392K	3900 ±10%	14.20	0.14
MC2W0807-472K	4700 ±10%	16.70	0.12
MC2W0807-562K	5600 ±10%	18.70	0.11
MC2W0807-682K	6800 ±10%	21.80	0.10
MC2W0807-822K	8200 ±10%	28.70	0.093
MC2W0807-103K	10000 ±10%	33.00	0.084

▶ Electrical Characteristics For MC2W0809 Series

Part Number	Inductance [μ H]	DCR (max) [Ω]	Rated Current (max) [A]
MC2W0809-100M	10 \pm 20%	0.04	2.60
MC2W0809-120M	12 \pm 20%	0.04	2.60
MC2W0809-150M	15 \pm 20%	0.05	2.10
MC2W0809-180M	18 \pm 20%	0.05	2.00
MC2W0809-220M	22 \pm 20%	0.06	1.70
MC2W0809-270M	27 \pm 20%	0.06	1.60
MC2W0809-330M	33 \pm 20%	0.07	1.40
MC2W0809-390M	39 \pm 20%	0.08	1.40
MC2W0809-470M	47 \pm 20%	0.10	1.30
MC2W0809-560M	56 \pm 20%	0.11	1.20
MC2W0809-680M	68 \pm 20%	0.14	1.10
MC2W0809-101K	100 \pm 10%	0.19	0.90
MC2W0809-121K	120 \pm 10%	0.22	0.82
MC2W0809-151K	150 \pm 10%	0.27	0.74
MC2W0809-181K	180 \pm 10%	0.31	0.71
MC2W0809-221K	220 \pm 10%	0.38	0.64
MC2W0809-271K	270 \pm 10%	0.53	0.57
MC2W0809-331K	330 \pm 10%	0.61	0.51
MC2W0809-391K	390 \pm 10%	0.69	0.48
MC2W0809-471K	470 \pm 10%	0.89	0.43
MC2W0809-561K	560 \pm 10%	1.01	0.40
MC2W0809-681K	680 \pm 10%	1.18	0.35
MC2W0809-821K	820 \pm 10%	1.57	0.32
MC2W0809-102K	1000 \pm 10%	1.84	0.30
MC2W0809-122K	1200 \pm 10%	2.10	0.27
MC2W0809-152K	1500 \pm 10%	2.80	0.23
MC2W0809-182K	1800 \pm 10%	3.21	0.21
MC2W0809-222K	2200 \pm 10%	4.21	0.19
MC2W0809-272K	2700 \pm 10%	4.94	0.17
MC2W0809-332K	3300 \pm 10%	6.16	0.15
MC2W0809-392K	3900 \pm 10%	6.84	0.14
MC2W0809-472K	4700 \pm 10%	7.89	0.13
MC2W0809-562K	5600 \pm 10%	11.5	0.12
MC2W0809-682K	6800 \pm 10%	13.2	0.11
MC2W0809-822K	8200 \pm 10%	15.2	0.10
MC2W0809-103K	10000 \pm 10%	22.0	0.089
MC2W0809-123K	12000 \pm 10%	25.0	0.073
MC2W0809-153K	15000 \pm 10%	29.1	0.068

► Electrical Characteristics For MC2W1014 Series

Part Number	Inductance [uH]	DCR (max) [Ω]	Rated Current (max) [A]
MC2W1014-6R3M	6.3 ±20%	0.026	4.30
MC2W1014-100M	10 ±20%	0.033	4.00
MC2W1014-120M	12 ±20%	0.035	3.90
MC2W1014-150M	15 ±20%	0.039	3.70
MC2W1014-180M	18 ±20%	0.047	3.50
MC2W1014-220M	22 ±20%	0.051	3.30
MC2W1014-270M	27 ±20%	0.057	3.10
MC2W1014-330M	33 ±20%	0.064	2.90
MC2W1014-390M	39 ±20%	0.074	2.70
MC2W1014-470M	47 ±20%	0.083	2.50
MC2W1014-560M	56 ±20%	0.104	2.30
MC2W1014-680M	68 ±20%	0.117	2.10
MC2W1014-820M	82 ±20%	0.130	1.90
MC2W1014-101K	100 ±10%	0.143	1.70
MC2W1014-121K	120 ±10%	0.195	1.50
MC2W1014-151K	150 ±10%	0.221	1.40
MC2W1014-181K	180 ±10%	0.260	1.30
MC2W1014-221K	220 ±10%	0.350	1.20
MC2W1014-271K	270 ±10%	0.390	1.10
MC2W1014-331K	330 ±10%	0.520	1.00
MC2W1014-391K	390 ±10%	0.570	0.92
MC2W1014-471K	470 ±10%	0.650	0.84
MC2W1014-561K	560 ±10%	0.790	0.75
MC2W1014-681K	680 ±10%	0.960	0.69
MC2W1014-102K	1000 ±10%	1.60	0.52
MC2W1014-122K	1200 ±10%	2.20	0.46
MC2W1014-152K	1500 ±10%	2.50	0.41
MC2W1014-182K	1800 ±10%	2.90	0.36
MC2W1014-222K	2200 ±10%	3.20	0.32
MC2W1014-272K	2700 ±10%	3.70	0.29
MC2W1014-332K	3300 ±10%	5.00	0.27
MC2W1014-392K	3900 ±10%	5.60	0.25
MC2W1014-472K	4700 ±10%	7.40	0.23
MC2W1014-562K	5600 ±10%	8.20	0.21
MC2W1014-682K	6800 ±10%	11.9	0.19
MC2W1014-103K	10000 ±10%	16.0	0.16
MC2W1014-123K	12000 ±10%	21.0	0.15
MC2W1014-153K	15000 ±10%	24.0	0.14

- Inductance tested at 1kHz, 0.25V
- Rated current: DC current at which the inductance drops 10% from its value without current