

Features

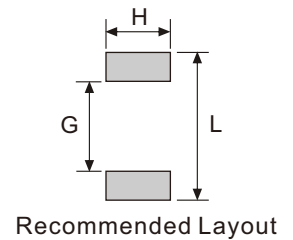
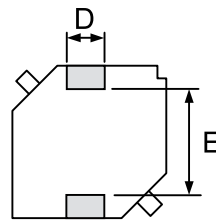
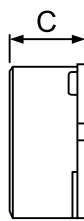
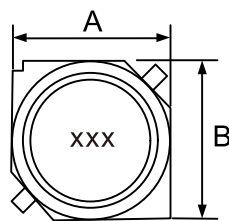
- Magnetically shielded construction
- Suitable for large current
- RoHS, Halogen Free and REACH compliance

General Specifications

- Storage temp range: -40°C to +125°C
- Operating temp range: -40°C to +125°C
- Moisture Sensitivity Level(MSL): 1



► Shape and Dimensions (Unit:mm)



| Type | A (max) | B (max) | C (max) | D (Ref) | E (Ref) | G (Ref) | H (Ref) | L (Ref) |
|----------|---------|---------|---------|---------|---------|---------|---------|---------|
| MSLC7635 | 7.6 | 7.6 | 3.5 | 2.0 | 5.4 | 3.7 | 2.2 | 7.9 |
| MSLC7651 | 7.6 | 7.6 | 5.1 | 2.0 | 5.4 | 3.7 | 2.2 | 7.9 |
| MSLC125 | 12.8 | 12.8 | 5.9 | 3.0 | 8.6 | 8.0 | 3.2 | 13.6 |
| MSLC126 | 12.8 | 12.8 | 6.9 | 3.0 | 8.6 | 8.0 | 3.2 | 13.6 |
| MSLC127 | 12.8 | 12.8 | 7.9 | 3.0 | 8.6 | 8.0 | 3.2 | 13.6 |

► Electrical Characteristics For MSLC7635 Series

| Part Number | Inductance [μH] | DCR(±20%) [Ω] | Isat(max) [A] |
|---------------|--------------------|------------------|------------------|
| MSLC7635-3R3M | 3.3 ±20% | 0.035 | 2.26 |
| MSLC7635-4R7M | 4.7 ±20% | 0.043 | 1.86 |
| MSLC7635-6R8M | 6.8 ±20% | 0.055 | 1.76 |
| MSLC7635-100M | 10 ±20% | 0.080 | 1.34 |
| MSLC7635-120M | 12 ±20% | 0.090 | 1.23 |
| MSLC7635-150M | 15 ±20% | 0.120 | 1.09 |
| MSLC7635-180M | 18 ±20% | 0.130 | 0.99 |
| MSLC7635-220M | 22 ±20% | 0.150 | 0.90 |
| MSLC7635-270M | 27 ±20% | 0.210 | 0.81 |
| MSLC7635-330M | 33 ±20% | 0.250 | 0.72 |
| MSLC7635-390M | 39 ±20% | 0.310 | 0.67 |
| MSLC7635-470M | 47 ±20% | 0.350 | 0.60 |
| MSLC7635-560M | 56 ±20% | 0.430 | 0.55 |
| MSLC7635-680M | 68 ±20% | 0.520 | 0.50 |
| MSLC7635-820M | 82 ±20% | 0.600 | 0.46 |
| MSLC7635-101M | 100 ±20% | 0.790 | 0.41 |

▶ Electrical Characteristics For MSLC7651 Series

| Part Number | Inductance [μ H] | DCR($\pm 20\%$) [Ω] | Isat(max) [A] |
|---------------|--------------------------|-----------------------------------|------------------|
| MSLC7651-3R3M | 3.3 $\pm 20\%$ | 0.034 | 2.14 |
| MSLC7651-4R7M | 4.7 $\pm 20\%$ | 0.039 | 1.96 |
| MSLC7651-6R8M | 6.8 $\pm 20\%$ | 0.050 | 1.79 |
| MSLC7651-100M | 10 $\pm 20\%$ | 0.055 | 1.63 |
| MSLC7651-120M | 12 $\pm 20\%$ | 0.073 | 1.42 |
| MSLC7651-150M | 15 $\pm 20\%$ | 0.081 | 1.33 |
| MSLC7651-180M | 18 $\pm 20\%$ | 0.102 | 1.15 |
| MSLC7651-220M | 22 $\pm 20\%$ | 0.115 | 1.09 |
| MSLC7651-270M | 27 $\pm 20\%$ | 0.159 | 0.91 |
| MSLC7651-330M | 33 $\pm 20\%$ | 0.182 | 0.84 |
| MSLC7651-390M | 39 $\pm 20\%$ | 0.199 | 0.80 |
| MSLC7651-470M | 47 $\pm 20\%$ | 0.221 | 0.75 |
| MSLC7651-560M | 56 $\pm 20\%$ | 0.306 | 0.64 |
| MSLC7651-680M | 68 $\pm 20\%$ | 0.345 | 0.60 |
| MSLC7651-820M | 82 $\pm 20\%$ | 0.390 | 0.57 |
| MSLC7651-101M | 100 $\pm 20\%$ | 0.432 | 0.50 |
| MSLC7651-121M | 120 $\pm 20\%$ | 0.440 | 0.47 |
| MSLC7651-151M | 150 $\pm 20\%$ | 0.730 | 0.40 |
| MSLC7651-181M | 180 $\pm 20\%$ | 0.780 | 0.39 |
| MSLC7651-221M | 220 $\pm 20\%$ | 0.940 | 0.33 |
| MSLC7651-271M | 270 $\pm 20\%$ | 1.250 | 0.31 |
| MSLC7651-331M | 330 $\pm 20\%$ | 1.400 | 0.27 |
| MSLC7651-391M | 390 $\pm 20\%$ | 1.520 | 0.27 |
| MSLC7651-471M | 470 $\pm 20\%$ | 1.700 | 0.25 |
| MSLC7651-561M | 560 $\pm 20\%$ | 2.390 | 0.22 |

▶ Electrical Characteristics For MSLC125 Series

| Part Number | Inductance [μH] | DCR(±20%) [Ω] | Isat(max) [A] | Irms(max) [A] |
|--------------|--------------------|------------------|------------------|------------------|
| MSLC125-6R0N | 6.0 ±30% | 0.016 | 3.60 | 4.90 |
| MSLC125-100M | 10 ±20% | 0.022 | 3.40 | 4.30 |
| MSLC125-150M | 15 ±20% | 0.026 | 2.80 | 3.90 |
| MSLC125-220M | 22 ±20% | 0.034 | 2.30 | 3.40 |
| MSLC125-330M | 33 ±20% | 0.042 | 1.90 | 3.10 |
| MSLC125-470M | 47 ±20% | 0.062 | 1.60 | 2.50 |
| MSLC125-680M | 68 ±20% | 0.083 | 1.30 | 2.20 |
| MSLC125-101M | 100 ±20% | 0.117 | 1.10 | 1.80 |
| MSLC125-151M | 150 ±20% | 0.190 | 0.88 | 1.40 |
| MSLC125-221M | 220 ±20% | 0.270 | 0.72 | 1.20 |
| MSLC125-331M | 330 ±20% | 0.410 | 0.59 | 1.00 |
| MSLC125-471M | 470 ±20% | 0.520 | 0.49 | 0.88 |
| MSLC125-681M | 680 ±20% | 0.760 | 0.43 | 0.73 |
| MSLC125-102M | 1000 ±20% | 1.120 | 0.34 | 0.60 |
| MSLC125-152M | 1500 ±20% | 1.730 | 0.29 | 0.48 |

▶ Electrical Characteristics For MSLC126 Series

| Part Number | Inductance [μH] | DCR(±20%) [Ω] | Isat(max) [A] | Irms(max) [A] |
|--------------|--------------------|------------------|------------------|------------------|
| MSLC126-2R0N | 2.0 ±30% | 0.012 | 10.0 | 6.2 |
| MSLC126-4R2N | 4.2 ±30% | 0.015 | 7.3 | 5.5 |
| MSLC126-7R0N | 7.0 ±30% | 0.018 | 5.7 | 5.0 |
| MSLC126-100M | 10 ±20% | 0.020 | 5.0 | 4.8 |
| MSLC126-150M | 15 ±20% | 0.024 | 4.2 | 4.4 |
| MSLC126-220M | 22 ±20% | 0.032 | 3.5 | 3.8 |
| MSLC126-330M | 33 ±20% | 0.041 | 2.8 | 3.4 |
| MSLC126-470M | 47 ±20% | 0.058 | 2.4 | 2.8 |
| MSLC126-680M | 68 ±20% | 0.079 | 2.0 | 2.4 |
| MSLC126-101M | 100 ±20% | 0.123 | 1.6 | 1.9 |
| MSLC126-151M | 150 ±20% | 0.273 | 1.0 | 1.2 |

▶ Electrical Characteristics For MSLC127 Series

| Part Number | Inductance [μ H] | DCR(\pm 20%) [Ω] | Isat(max) [A] | Irms(max) [A] |
|--------------|--------------------------|---------------------------------|------------------|------------------|
| MSLC127-1R2N | 1.2 \pm 30% | 0.007 | 13.0 | 8.2 |
| MSLC127-2R7N | 2.7 \pm 30% | 0.009 | 10.0 | 7.0 |
| MSLC127-3R9N | 3.9 \pm 30% | 0.011 | 9.0 | 6.7 |
| MSLC127-5R6N | 5.6 \pm 30% | 0.012 | 7.8 | 6.3 |
| MSLC127-6R8N | 6.8 \pm 30% | 0.013 | 7.2 | 5.9 |
| MSLC127-100M | 10 \pm 20% | 0.016 | 5.5 | 5.4 |
| MSLC127-150M | 15 \pm 20% | 0.018 | 4.7 | 5.0 |
| MSLC127-220M | 22 \pm 20% | 0.026 | 4.0 | 4.0 |
| MSLC127-330M | 33 \pm 20% | 0.040 | 3.2 | 6.4 |
| MSLC127-470M | 47 \pm 20% | 0.053 | 2.7 | 3.0 |
| MSLC127-680M | 68 \pm 20% | 0.078 | 2.0 | 2.4 |
| MSLC127-101M | 100 \pm 20% | 0.125 | 1.9 | 1.9 |
| MSLC127-151M | 150 \pm 20% | 0.175 | 1.5 | 1.6 |
| MSLC127-221M | 220 \pm 20% | 0.258 | 1.3 | 1.3 |

- Inductance tested at 100kHz
- Heat Rating Current (Irms): Current that cause the temperature 40°C rise from 25°C
- Saturation Current (Isat): DC current at which the inductance drops 10% from its value without current